



XCUT CNC Machine and Tool Holding Systems



TERMS & CONDITIONS

1. Dimensions & Length of tools may vary from indications in catalogue.
2. No liability can be accepted for printing errors or technical changes of any kind.
3. Our conditions of sales & terms of payment apply on available request.

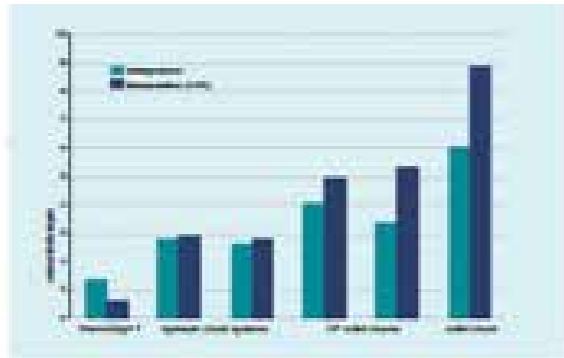
CONTENT	PAGE NO.
TECHNOLOGY - MACHINE	
• MAJOR HIGHLIGHT	4
• MACHINE TECHNICAL SPECIFICATION	5
• MACHINE MODELS	6
SHRINK MACHINE	
• SKU2200-XCD	7
• SKU3400TLK-11-FS-XCD	8
• SKU3400TWK-11-FS-XCD	9
• SKU3400WK-11-FS-XCD	10
• SKU3400WK-11-WS-XCD	11
• ACCESSORIES	12 - 17
TECHNOLOGY - HOLDER	
• SHRINK HOLDER HIGHLIGHT	18
• SHRINK HOLDER TECHNOLOGY	19
TOOL HOLDING SYSTEM	
• SHRINK HOLDER OVERVIEW	20
• XSKH SHRINK CHUCK (STD)	20 - 24
• XSFH SLIM SHRINK CHUCK	25 - 26
• XHDH HEAVY SHRINK CHUCK	27 - 28
• XAGH ALL GRIP SHRINK CHUCK	28 - 29
• XSFE SHRINK EXTENSION	30
• XER SHRINK COLLET TO DIN 6499 ER	31 - 32
• ACCESSORIES	33 - 34

Xcel Shrink-Fit Machines

Major Highlight - Benefits Of Xcel Clamping System:

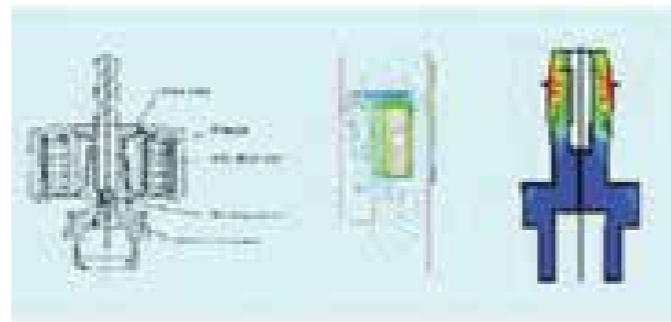
- Shrink Cycle - Induction Heating & Liquid cooling (Emulsion) ensure least cycle time.
- Simetrical design offer high quality balancing, result in least chattering and vibration Balancing RPM - 12000 to 42000 as per holder design
- Machine operating system ensure high safety and best ergonomy in Automatic and Manual machines, Shrink Cycle - Avoid manual handling of hot chuck and Liquid cooling ensure 100% cooling of heated holder, Liquid Cooling - Avoid any forced cooling arrangements, result in damage of cutting edge and reduce spares and maintenance
- Combination of Patented Pole disc and taper inside holder ensure smooth get in and out of tool shank. Can be use carbide or HSS tools. Usually take out tool is not smooth in major competitors

Bore preperation with high tolerance accuracy Benefits:



- Superior Axial Run-out
- Regid clamping force

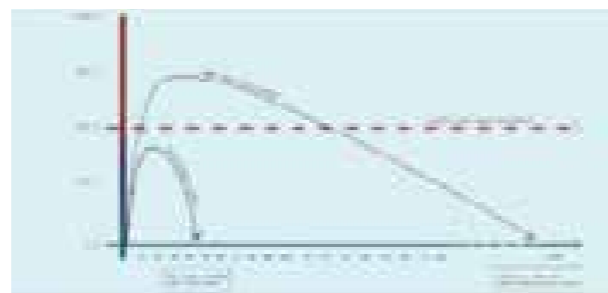
Heating Technology - Induction Heating Benefits:



- Combination of such heating with patented pole disc design allows safe thermal expansion of tool Such design prevent heat to disapear or transfer from tool side
- Automatic heat control as per holder design and shank bore

Cooling Technology - Liquid Emulsion Benefits :

- Cooling carried out at atmospheric temperature. It is natural cooling, not forced cooling
- As holder never exceed critical temperature it is recommended to cool with Liquid



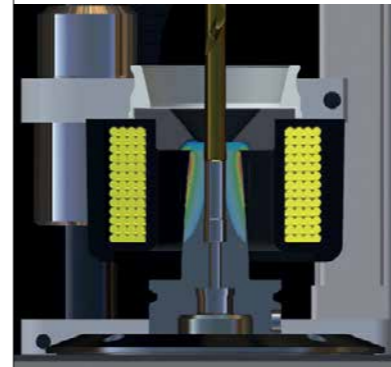
Xcel Shrink-Fit Machines

Technical specification

Cooling Cycle
More effective than contact cooling Aprox 10 time better



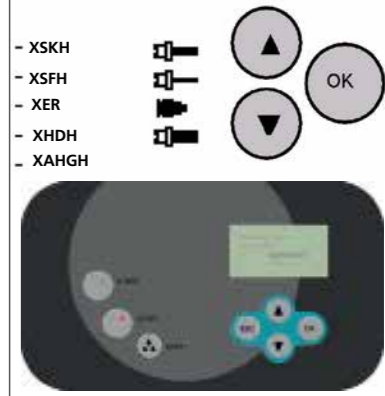
Heating Cycle - Induction Heating
Automatic setting allow controlled heating, as per holder type and bore



Ergonomy and Safety
No need to handle hot holder as heating and cooling done on same position



Easy to Use
Simple selection and operation from displan panel



Drying of Holder
After cooling, holder get dry for safe handling



Water Level Indication
Water Level at MIN. switch is activated a message stating "Please fill water tank"



User friendly Accessories
Stop block is available for new professional models



Quick change system
Changing coil (using option) is very easy with quick change mechanism



Over All Benefits

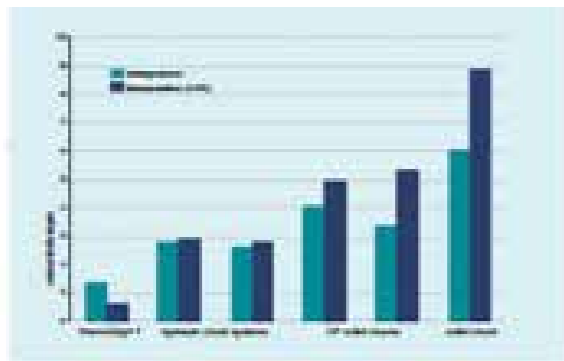
- 100% Operator's safety
- No maintenance required
- Slim and Simetrical design allows less holder weight and deep approach length. Such design give less load on machine spindle.
- Superior balancing
- High run-out accuracy
- High clamping force
- Longer cutting tool life
- Improve machining effeciency and surface finish
- Reduce cutting force and machine load

Xcel Shrink-Fit Machines

Major Highlight - Benefits Of Xcel Clamping System:

- Shrink Cycle - Induction Heating & Liquid cooling (Emulsion) ensure least cycle time.
- Simetrical design offer high quality balancing, result in least chattering and vibration Balancing RPM - 12000 to 42000 as per holder design
- Machine operating system ensure high safety and best ergonomy in Automatic and Manual machines, Shrink Cycle - Avoid manual handling of hot chuck and Liquid cooling ensure 100% cooling of heated holder, Liquid Cooling - Avoid any forced cooling arrangements, result in damage of cutting edge and reduce spares and maintenance
- Combination of Patented Pole disc and taper inside holder ensure smooth get in and out of tool shank. Can be use carbide or HSS tools. Usually take out tool is not smooth in major competitors

Bore preperation with high tolerance accuracy Benefits:



- Superior Axial Run-out
- Regid clamping force

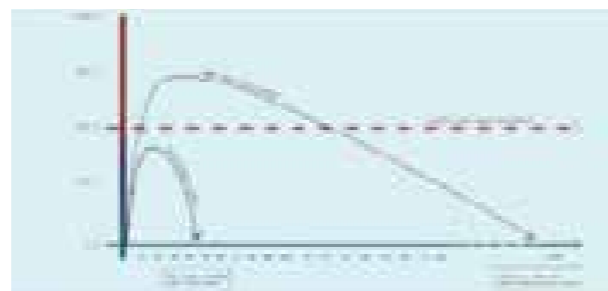
Heating Technology - Induction Heating Benefits:



- Combination of such heating with patented pole disc design allows safe thermal expansion of tool Such design prevent heat to disapear or transfer from tool side
- Automatic heat control as per holder design and shank bore

Cooling Technology - Liquid Emulsion Benefits :

- Cooling carried out at atmospheric temperature. It is natural cooling, not forced cooling
- As holder never exceed critical temperature it is recommended to cool with Liquid



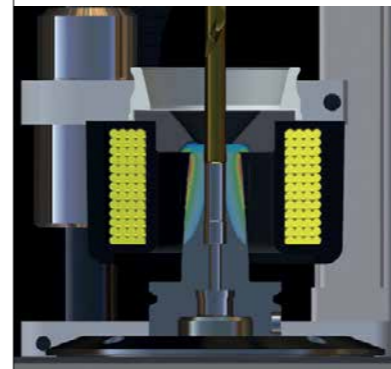
Xcel Shrink-Fit Machines

Technical specification

Cooling Cycle
More effective than contact cooling Aprox 10 time better



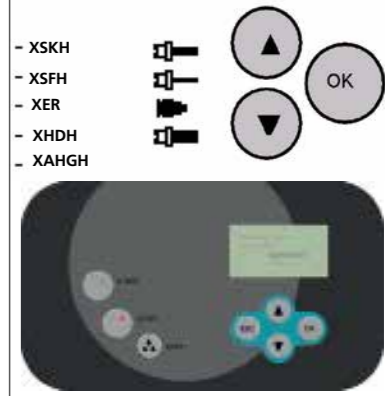
Heating Cycle - Induction Heating
Automatic setting allow controlled heating, as per holder type and bore



Ergonomy and Safety
No need to handle hot holder as heating and cooling done on same position



Easy to Use
Simple selection and operation from displan panel



Drying of Holder
After cooling, holder get dry for safe handling



Water Level Indication
Water Level at MIN. switch is activated a message stating "Please fill water tank"



User friendly Accessories
Stop block is available for new professional models



Quick change system
Changing coil (using option) is very easy with quick change mechanism



Over All Benefits

- 100% Operator's safety
- No maintenance required
- Slim and Simetrical design allows less holder weight and deep approach length. Such design give less load on machine spindle.
- Superior balancing
- High run-out accuracy
- High clamping force
- Longer cutting tool life
- Improve machining effeciency and surface finish
- Reduce cutting force and machine load

Xcel Shrink Machines

Xcel Machines - Air Cooler



SKU2200-XCD



SKU3400TLK-FS-XCD



SKU3400TLK-WS-XCD

Xcel Machines - Liquid/Emulsion Cooled



SKU3400TWK-WS-XCD



SKU3400WK-WS-XCD



SKU3400WK-HL-XCD

Starter



Air cooling

Allrounder



Liquid cooling

Professional



Liquid cooling with drying

SKU2200-XCD

The starter model in the automatic class of inductive shrink units

- Processor controlled 8 kW high frequency generator
- Shrinking range Ø3 – 20 mm solid carbide and Ø6 – 20 mm HSS
- Maximum shrinking time of all Monogrip chucks 5 seconds
- Maximum tool length from taper base line 290 mm
- For all standard tool spindles by means of a simple change of the tool holder
- Optimal protection between coil and tool shank by means of 3 interchangeable discs with quick changing
- Autostart of the integrated fan for cooling the heated chucks
- Automatic return of the coil to the start position after the heating process
- Cooling - Air cooled
- Cooling time 300 seconds



DIMENSIONS			CLAMPING RANGE Ø	SUITABLE TOOL SHANKS	AIR PRESSURE	ELECTRIC CURRENT SUPPLY	POWER KW	WEIGHT KG
TD	BW	HH						
390	310	640	3-20mm (HM/SC) 6-20MM (HSS)	HM (SC) / HSS	-	3 X 400 V / 16 A	8	25

Delivery Package: Shrink unit 'SKU2200' with coil and 3 interchangeable discs, protective gloves as well as the integrated fan.

SKU3400TLK-11-FS-XCD

The Air cooler

- Clamping range SC: 3mm - 32mm
- Clamping range HSS: 6mm - 32mm
- Coil: fixed
- Max. Tool length: 350mm @ HSK-A63
- Max. cooling length: 160mm @ HSK-A63
- Cooling type: Air cooled (Optional liquid cooler)
- Cooling time: 300s
- Max. machine interface: HSK-A100 und SK50
- Dimension (DxWxH): 780x535x950



DIMENSIONS			CLAMPING RANGE Ø	SUITABLE TOOL SHANKS	AIR PRESSURE	ELECTRIC CURRENT SUPPLY	POWER KW	WEIGHT KG
TD	BW	HH						
780	535	950	3-32mm (HM/SC) 6-32MM (HSS)	HM (SC) / HSS		3 X 400 V / 16 A	-	69

Delivery Package: Shrink unit with coil and 4 pole discs, protective gloves, 1 litre coolant emulsion.
(corresponds at 1:30 to one complete filling of the coolant tank)

SKU3400TWK-11-FS-XCD

The right cooling for each application

After the heating process the cooling tower is drawn over the shrink holder. By pressing the cooling button, the cooling down of the hot shrink holder is started. After a fixed time the cooling process ends and you can move the cooling curtain down wards manually. The shrink holder can be removed securely cooled down.

- Clamping range SC: 3mm - 32mm
- Clamping range HSS: 6mm - 32mm
- Coil: Fixed
- Max. Tool length: 400mm @ HSK-A63
- Max. cooling length: 160mm @ HSK-A63
- Cooling type: Liquid cooling desktop machine
- Cooling time: 20s
- Water tank: 22L
- Max. machine interface: HSK-A100 und SK50
- Dimension (DxWxH): 560x800x950
- Weight: 66 kg



DIMENSIONS			CLAMPING RANGE Ø	SUITABLE TOOL SHANKS	AIR PRESSURE	ELECTRIC CURRENT SUPPLY	POWER KW	WEIGHT KG
TD	BW	HH						
560	800	950	3-32mm (HM/SC) 6-32MM (HSS)	HM (SC) / HSS	-	3 X 400 V / 16 A	22L	66

Delivery Package: Shrink unit with coil and 4 pole discs, protective gloves, 1 litre coolant emulsion.
(corresponds at 1:30 to one complete filling of the coolant tank)

SKU3400WK-11-FS-XCD

Liquid cooling with drying

Due to the fully automatic process, the heated shrink chuck moves down into the cooling position via a pneumatic cylinder after the heating process and the operator does not have to touch the shrink chuck. The chuck is directly rinsed with the emulsion in the cooling position. After the end of the water cooling time the chuck is blow-dried when moving up.

- Clamping range SC: 3mm - 32mm
- Clamping range HSS: 6mm - 32mm
- Coil: Fixed
- Max. Tool length: 400mm @ HSK-A63
- Max. cooling length: 200mm @ HSK-A63
- Cooling type: Liquid cooling "Cool down" with drying
- Cooling time: 20s
- Water tank: 30L
- Max. machine interface: HSK-A100 und SK50
- Dimension (DxWxH): 580x800x1660
- Weight: 150 kg



DIMENSIONS			CLAMPING RANGE Ø	SUITABLE TOOL SHANKS	AIR PRESSURE	ELECTRIC CURRENT SUPPLY	POWER KW	WEIGHT KG
TD	BW	HH						
580	800	1660	3-32mm (HM/SC) 6-32MM (HSS)	HM (SC) / HSS	4 Bar	3 X 400 V / 16 A	30L	150

Delivery Package: Shrink unit with coil and 4 pole discs, protective gloves, 1 litre coolant emulsion.
(corresponds at 1:30 to one complete filling of the coolant tank)

SKU3400WK-11-WS-XCD

The right cooling for each application

Due to the fully automatic process, the heated shrink chuck moves down into the cooling position via a pneumatic cylinder after the heating process and the operator does not have to touch the shrink chuck. The chuck is directly rinsed with the emulsion in the cooling position. After the end of the water cooling time the chuck is blow-dried when moving up.

- Clamping range SC: 3mm – 32 (50) mm
- Clamping range HSS: 6mm – 32 (50) mm
- Coil: Quick change system - expandable up to dia. 50mm
- Max. Tool length: 680mm @ HSK-A63
- Max. cooling length: 400mm @ HSK-A63
- Cooling type: Liquid cooling with drying
- Cooling time: 20s
- Water tank: 30L
- Max. machine interface: HSK-A100 und SK50
- Dimension (DxWxH): 580x800x1660
- Weight: 150 kg



DIMENSIONS			CLAMPING RANGE Ø	SUITABLE TOOL SHANKS	AIR PRESSURE	ELECTRIC CURRENT SUPPLY	POWER kW	Weight KG
TD	BW	HH						
580	800	1660	3-50mm (HM/SC) 6-50MM (HSS)	HM (SC) / HSS	4 Bar	3 X 400 V / 16 A	30L	150

Delivery Package: Shrink unit with coil and 4 pole discs, protective gloves, 1 litre coolant emulsion.
(corresponds at 1:30 to one complete filling of the coolant tank)



Marketed by:

XCEED
GROUP

71/75, 7th floor, Mittal Tower, C-wing, Nariman Point, Mumbai - 400021
Toll free no.: 1800226676 Tel.No.: (91-22) 66154999, 66366676
E-mail: contact@xceedgroup.in Website: www.xceedgroup.in

OUR NETWORK

AHMEDABAD • BARODA • BANGALORE • CHENNAI • COIMBATORE • DELHI • THANE • PUNE • DUBAI • MUMBAI*
Aurangabad • Belgaum • Nagpur • Nasik • Rajkot • Surat • Kolkata • Indore • Kolhapur • Jamshedpur • Hosur

www.xcel-tools.com

* HEAD OFFICE